



Engine 2

180 South Main St Auburn, Maine

May 28, 2024 Planning Board
Barry Sheff, P.E.



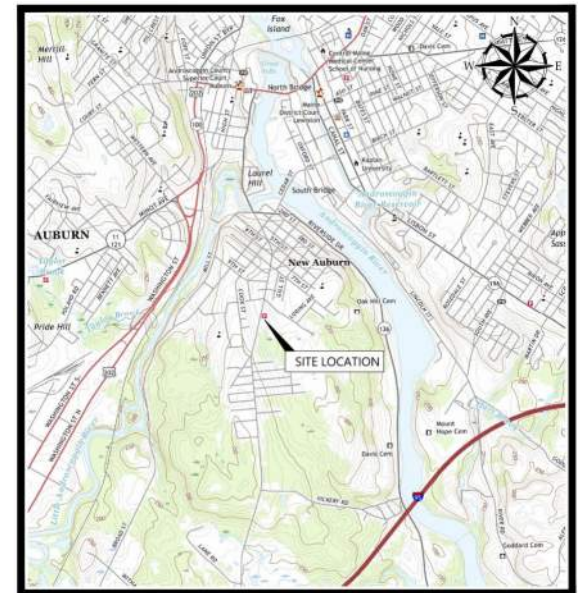
Agenda

- **Project Background**
- **Existing and Proposed Conditions**
 - **Waiver Needs**
- **Discussion**

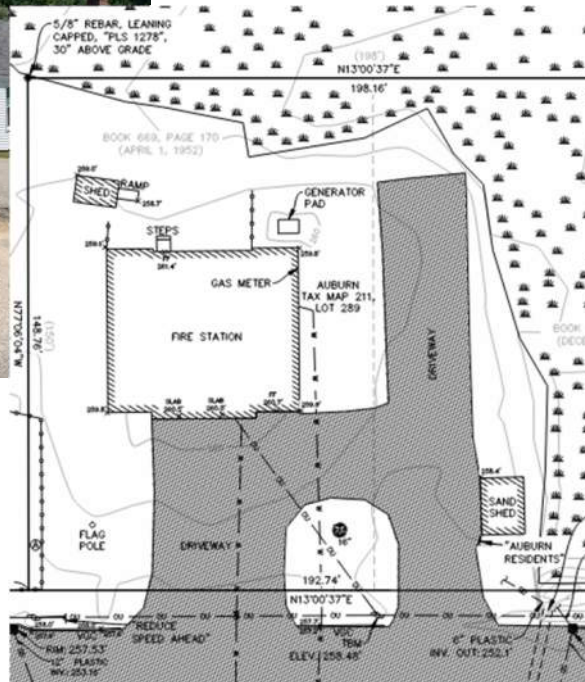
Project Background

Project Goal: *Replace aging Engine 2 Fire Station*

- ▶ 2020 Public Safety Facilities Study
- ▶ Build on a legacy of excellence, service + safety
- ▶ Oldest of City's three fire stations, 1952
- ▶ Right-size and Purpose-built
- ▶ Provide drive-through apparatus bays, improving safety
- ▶ Uninterrupted 24/7 Fire and EMS operations during construction



Existing Conditions



Zone: T-4.2b

- ▶ Maximum Principal Front Yard Exceeded
- ▶ Salt Shed (Accessory Structure) within Front Yard Setback
- ▶ Maximum Lot Width Exceeds 120'
- ▶ Vehicle Entry Widths Exceed 20'
- ▶ Multiple Vehicle Entry Widths Exceed 20'
- ▶ Multiple Two-Way Access Drives Not Permitted
- ▶ Minimum Curb Cut Separation Not Met



Zone: T-4.2b

- ▶ Maximum Principal Front Yard Exceeded
- ▶ Maximum Lot Width Exceeds 120'
- ▶ Vehicle Entry Widths Exceed 20'
- ▶ Multiple Vehicle Entry Widths Exceed 20'
- ▶ Multiple Two-Way Access Drives Not Permitted
- ▶ Minimum Curb Cut Separation Not Met



Thank you

